




SOUTHWEST WASHINGTON CHAPTER, NECA

SHORT CIRCUIT

NEW RESIDENTIAL HOURLY COST DATA SHEETS EFFECTIVE JUNE 1, 2021!

The Membership voted to allocate this CBA Scheduled increase as follows: **\$0.42 to Wages, \$0.07 to Local 76 Retirement, and \$0.01 to NEBF.**

Along with the 2021-2023 Residential CBA Notice, Updated Residential HCDS were sent to the membership in May and can be found at necawa.org
Click [Here](#) to access the HCDS



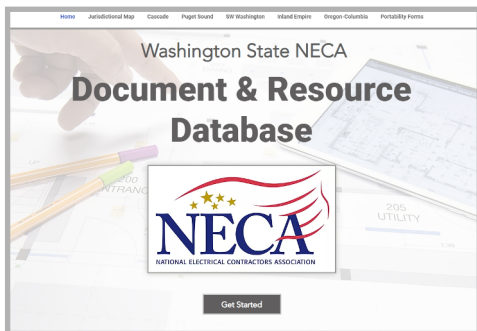
SOUTHWEST WASHINGTON CHAPTER, N.E.C.A.
3815 100th St SW, Suite 1A
Lakewood, Washington 98499
PHONE: (253) 584-4095
5/18/2021

RESIDENTIAL HOURLY COST DATA SHEET: EFFECTIVE: June 1, 2021- in effect until midnight, December 31, 2021

RESI CLASSIFICATION	Foreman (10%) #22	Leadman (05%) #22	Journeyman Wireman #22	Resi Wireman Initiated after 8/7/2015 #22
BASE WAGE	\$29.80	\$28.44	\$27.09	As Mutually Agreed
NAT'L FAMILY MEDICAL PLAN	\$6.61	\$6.61	\$6.61	\$6.61
LOCAL 76 RETIREMENT	\$2.93	\$2.93	\$2.93	\$2.93
N.E.B.F. (based on 3% of gross wages*)	\$0.89	\$0.85	\$0.81	3% of Gross
B.A.M.F.	\$0.14	\$0.14	\$0.14	\$0.14
J.A.T.C.	\$0.30	\$0.30	\$0.30	\$0.30
LMCC (MARKETING FUND)	\$0.10	\$0.10	\$0.10	\$0.10
ADMINISTRATIVE FEE	\$0.05	\$0.05	\$0.05	\$0.05
N.E.C.A. (based on 1% of gross wages*)	\$0.30	\$0.28	\$0.27	1% of Gross
TOTALS:	\$41.12	\$39.70	\$38.30	NA

CLASSIFICATION	Apprentices: Class #6		
	70%	80%	90%
BASE WAGE	\$18.96	\$21.67	\$24.38
NAT'L FAMILY MEDICAL PLAN	\$6.61	\$6.61	\$6.61
LOCAL 76 RETIREMENT	\$2.05	\$2.34	\$2.64
N.E.B.F. (based on 3% of gross wages*)	\$0.57	\$0.65	\$0.73
B.A.M.F.	\$0.14	\$0.14	\$0.14
J.A.T.C.	\$0.30	\$0.30	\$0.30
LMCC (MARKETING FUND)	\$0.10	\$0.10	\$0.10
ADMINISTRATIVE FEE	\$0.05	\$0.05	\$0.05
N.E.C.A. (based on 1% of gross wages*)	\$0.19	\$0.22	\$0.24
TOTALS:	\$28.97	\$32.08	\$35.19

* Contributions based on a percentage of gross wages may/will be different than the hourly rate shown. NEBF and NECA are calculated as a percentage of total Gross Productive Labor Payroll.
** Local 76 401K Employee may elect \$0, \$1, \$2, \$3, \$4, \$5, \$6, \$7, \$8 (Variable Election will effect Base Wage and NEBF)
If no election, Contribution will default at \$1.50. Please call the Chapter with Questions.



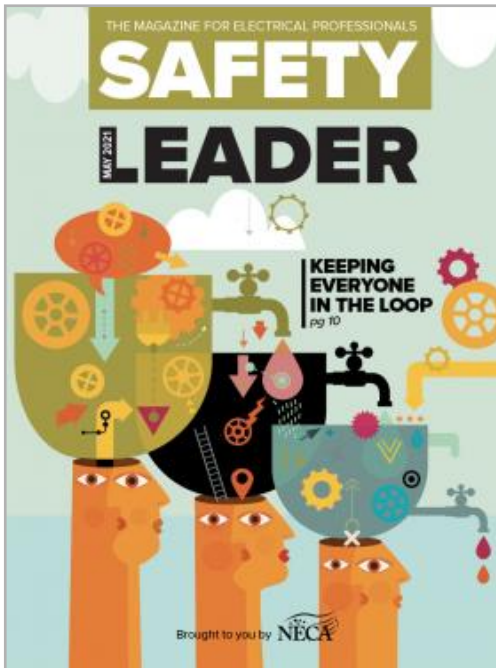
Don't Forget:

On the necawa.org website you have access to all of the Washington State Jurisdictions Contact Information, Bargaining Agreements, Cost Sheets, Benefit Administrators and Portability Forms. Each Page is password protected with the current calendar year. Please Contact the Chapter if you need assistance using this convenient Member Service!

IBEW LOCAL 76 OPEN JOB CALLS

3 Telecom Installers, 2 Technicians, 1 Residential

CHECK IT OUT: SAFETY LEADER MAGAZINE



June is National Safety Month, and to kick off the occasion, we'd like to highlight NECA's Safety Leader magazine. Safety Leader is a new quarterly magazine that seeks to inform and educate electrical contractors on safety from various angles—electrical, workplace, PPE, regulations, leadership, line work, NFPA 70E, and more. Safety Leader is bundled with NECA's Electrical Contractor magazine in February, May, August and November. To stay in the loop and receive Safety Leader, subscribe to Electrical Contractor magazine [here](#) or the newsletter [here](#).

Haley Masbruch, Project Manager & Service Coordinator at Danard Electric, has been featured in the latest issue of Safety Leader Magazine. Haley was interviewed about how maintaining a safe workplace benefits employees and the company's ultimate performance. Haley goes on to share valuable insights from her experiences in managing safety responsibilities. Check out the article [here](#).



LMCC JOBSITE SIGNS



The LMCC Job Site Sign Program provides a great way to advertise your company. **The LMCC will provide a reimbursement of up to \$400** for all signatory local firms for job site signs. These signs are 4'x6', made of white plastic material, and can include your company's information. To utilize this program, contact the Chapter Office and send us the desired quantity along with a high quality logo. Click [here](#) to view the updated price sheet.

ONLINE LEARNING IN JUNE

Free access to NECA Developed Online Training courses for a limited time! Use [this link](#) and coupon code: **NECA2021**

All upcoming virtual courses currently offered in June:

- **Succession Planning Virtual Classroom** - Wednesday, June 9, 2021 | 12:00 PM - 2:00 PM ET. The purpose of this program is to discuss with the participants the different ways to transfer ownership from the founders to children, key employees, or independent third parties. We discuss various methods, planning strategies, document drafting, valuation matters, and other major concerns to the process. **Price: \$75**
- **Calculating Shop Burden Virtual Classroom** - Thursday, June 17, 2021 | 12:00 PM - 3:00 PM ET. The purpose of this presentation is to detail the various types of expenses incurred by an electrical contractor in support of a proper determination of overhead and burden rates. The objective is to provide a clear and concise discussion surrounding the scope of services provided by the electrical contractor and thus how overhead and burden should be calculated. **Price: \$100**
- **Change Order Management Virtual Classroom** - Monday, June 21st, 2021 | 1:00 - 4:00 PM ET. This four-hour interactive course explores the change order process from a subcontractor's view point and provides participants with hands on training in recognizing, scoping, pricing, and negotiating change orders. **Price: \$100**



Free on-demand Safety Webinar:

- **NECA COVID-19 Construction Site Safety Training** - Designed for all individuals on a construction site, this program was developed to help individuals better prepare themselves to prevent the spread of COVID-19 in the workplace. This course incorporates Center for Disease Control and Prevention, World Health Organization, and OSHA requirements and recommendations.

To register for upcoming courses or browse for more, click [here!](#)

Contact the Chapter for more information or if you need assistance

NECA ASSOCIATE MEMBERS


Arthur J. Gallagher
David Brink
Cell:(253)318-6965


Kelly Pritchard
Cell:(253)896-5943


Roel Franco
Cell:(253)779-3612


Joseph Zimmerman
Cell:(206)200-3825

CALENDAR

6 MONTHS OF UNEMPLOYMENT

	Thurston	Pierce	Grays Harbor	King	WA State
Nov	6.3	7.5	9.6	4.3	5.9
Dec	6.5	7.6	10.1	6.8	7.2
Jan	6.0	7.1	9.1	6.3	6.8
Feb	6.1	7.1	9.2	5.3	6.4
Mar	5.9	6.8	8.8	5.4	6.1
Apr	6.0	7.0	8.9	5.2	6.1

Unemployment Rates
(Not Seasonally Adjusted)

\$100 LANDS' END CREDIT

Don't forget to utilize your chapter funded **\$100 reimbursement** for your first order on the Land's End/NECA Storefront. [Click Here](#) to access the store, customize your gear, and purchase it with your credit card. **Submit your proof of purchase** to the chapter and we will process your reimbursement!

NEED MORE SAFETY EQUIPMENT?

The LMCC has Safety Equipment. If you are in need of more Hardhats, Face Masks, Glasses, Gloves, or Vests let the Chapter Office know. **(253) 584-4095**

****Due to Covid-19, all events are subject to change, sometimes quickly****

Notification will be sent out if needed.

June 8	LMCC Meeting/JATC Office
June 14	JATC Comm & Trust Meeting/JATC Office
June 21	Future Executive Committee/NECA Office
June 23	Board Of Directors Meeting/NECA Office
July 5	Fourth of July Holiday Observed
July 12	JATC Comm & Trust Meeting/JATC Office
July 13	LMCC Meeting/JATC Office
July 26	Future Executive Committee/NECA Office
July 28	Board Of Directors Meeting/NECA Office
August 9	JATC Comm & Trust Meeting/JATC Office
August 10	LMCC Meeting/JATC Office
August 23	Future Executive Committee/NECA Office
August 25	Board Of Directors Meeting/NECA Office
September 13	JATC Comm & Trust Meeting/JATC Office
September 14	LMCC Meeting/JATC Office
September 20	Future Executive Committee/NECA Office
September 22	Board Of Directors Meeting/NECA Office

FUTURE EVENTS

Oct 9-12, 2021	National Convention/Nashville, TN
Dec 4, 2021	NECA Holiday Party, TC&GC
May 13-15, 2022	Spring Meeting, Ocean Shores
Oct 15-18, 2022	National Convention/Austin, TX